

## Welcome to Chaska.Net Broadband Internet Service!

This instruction sheet will help you install your new Client Bridge. If you have any questions during the install process, feel free to call our technical support line at 952-227-INET(4638) Monday through Friday 8:00 AM to 8:00 PM or visit our website at <http://www.chaska.net>

Step 1: Verify all shipping contents. You should have everything that is pictured in image 1. Remove Network Cable and Client Bridge from their plastic wrapping. Remove Power Supply from its box.



Image 1: Contents of the Client Bridge Box

Step 2: Connect the large end of the Power Supply to an AC outlet. Connect the small end of the Power Supply to the connection marked "DC IN" on the back of the Client Bridge. Refer to Image 2.

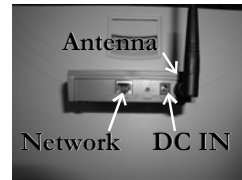


Image 2: Connectors on the back of the bridge

Step 3: Connect one end of the Network cable to the "Network" connection on the back of the Client Bridge. Connect the other end of this cable to the network adapter on your computer, or the WAN/Internet connection on your broadband router. Refer to Images 2 and 3.



Image 3: Typical network adapter connection

Step 4: Make sure your computer is set to receive its internet address from a server. This is called "DHCP", and most computers have this set by default. If you are having problems connecting, please refer to the back of this page for instructions on changing your network settings.

Step 5: Ensure that the "Power" "LAN" and "WLAN" lights are all on. If the LAN light is not on, verify that the network cables are connected. If the WLAN light is not on, try moving the bridge to another location near your computer. Refer to Image 4.

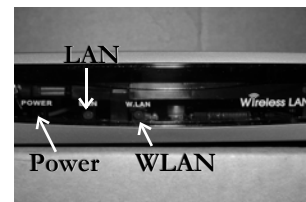


Image 4: Front of the Client Bridge

### Common problems encountered during self-installation

Q: Where do I connect the network cable on my computer?

A: Many computers have a telephone card or "Modem" installed. The connection for a phone line is much smaller than the network connection port. Refer to Image 5 and Image 3.

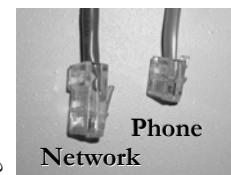


Image 5: Network and Phone cables

Q: I have more than one Network Adapter on my computer, which one should I use?

A: Generally these would be labeled "Net 1" and "Net 2" or something similar. Use the lowest numbered one.

Q: Where do I put the Client Bridge?

A: Locate the bridge as high as possible. On the top of a desk, near an exterior wall or window is ideal. Try to keep the bridge away from your monitor, as this may cause interference.

Q: I already have a wireless network in my home, can I still use the service?

A: Definitely, just use a different channel, such as 1 or 6, for your home network. Using the same channel as our system, channel 9, may cause interference to your home network.

# Configuring your computer to use DHCP

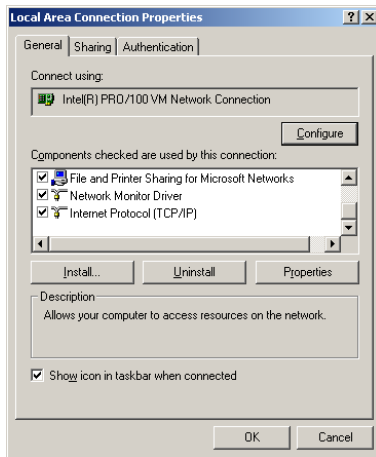
Please note: This will be unnecessary on most computers. Check these instructions first if you are having problems connecting to the internet.

Windows 2000<sup>®</sup> and Windows XP<sup>®</sup>

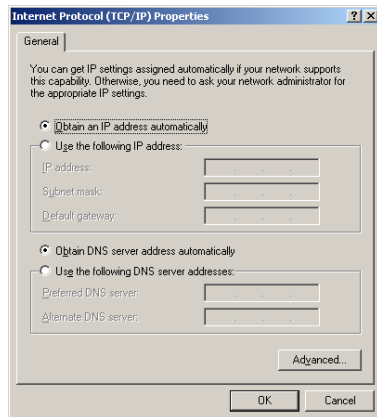
1. Windows 2000: Click **Start Menu**, choose **Settings**, select **Control Panel** and double click on **Network and Dial-Up Connection**.

Windows XP: Click **Start Menu**, choose **Control Panel**. Select **Classic View** in the upper left corner, then double click on the **Network Connections** icon.

2. Right click on the **Local Area Connection** bound to your network adapter and select **Properties**. Choose **Internet Protocol (TCP/IP)** and click on the **Properties** button.

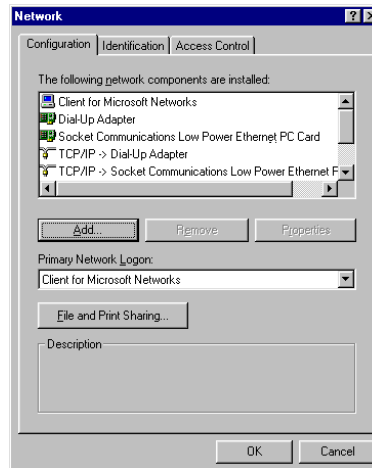


3. In the **General** tab, select **Obtain an IP address automatically** and **Obtain DNS server address automatically**. Then click on the **OK** button. Click on the **OK** button again in the **Local Area Connection Properties** Window.



Windows 95, 98 and ME<sup>®</sup>

1. Click **Start Menu**, choose **Settings**, select **Control Panel** and double click on **Network**. In **Configuration** tab, select **TCP/IP** and click on the **Properties** button.



2. In the **IP Address** tab, select **Obtain an IP address automatically**. Click on the **OK** button. Click on the **OK** button again in the **Network** Window.

(Note: At this time Windows may require you to insert the Windows CD and/or restart your computer.

